

P2010



- ▶ Patented COAX® technology.
- ▶ Available with a two-stage COAX® cartridge MICRO. Choose an Si cartridge for extra vacuum flow, a Pi cartridge for high performance at low feed pressure or an Xi cartridge when high flow and deep vacuum is needed.
- ▶ Large vacuum flow in relation to energy consumption.
- ▶ Low weight.
- ▶ Miniature size.
- ▶ Inline design.
- ▶ Short cycle times.
- ▶ Quick and easy mounting.

TECHNICAL DATA

| Description | Unit | Value |
|---------------------|-------|----------------------------|
| Feed pressure, max. | MPa | 0.7 |
| Noise level | dB(A) | 61-64 |
| Temperature range | °C | -10-50 |
| Weight | g | 15.3 |
| Material | | PA, NBR, Al, SS, POM, CuZn |

VACUUM FLOW

| COAX® Cartridge | Feed pressure MPa | Air consumption NI/s | Vacuum flow (NI/s) at different vacuum levels (-kPa) | | | | | | | | | | Max vacuum -kPa |
|-----------------|-------------------|----------------------|--|------|-------|-------|-------|-------|-------|-------|-------|----|-----------------|
| | | | 0 | 10 | 20 | 30 | 40 | 50 | 60 | 70 | 80 | | |
| Bi03-2 | 0.18 | 0.14 | 0.23 | 0.15 | 0.060 | 0.040 | 0.035 | 0.023 | 0.013 | 0.006 | — | 83 | |
| Si02-2 | 0.60 | 0.12 | 0.28 | 0.21 | 0.12 | 0.08 | 0.07 | 0.06 | 0.04 | 0.02 | — | 75 | |
| Xi2.5-2 | 0.50 | 0.13 | 0.24 | 0.17 | 0.10 | 0.06 | 0.04 | 0.03 | 0.02 | 0.01 | 0.010 | 92 | |

For vacuum flows at other feed pressures, see COAX® Cartridge data sheets.

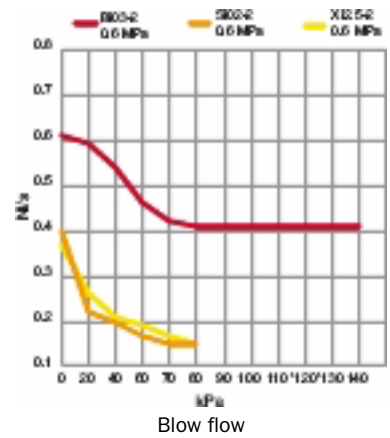
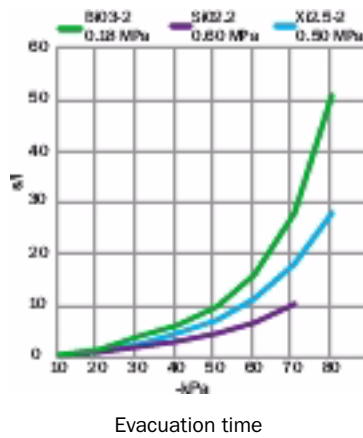
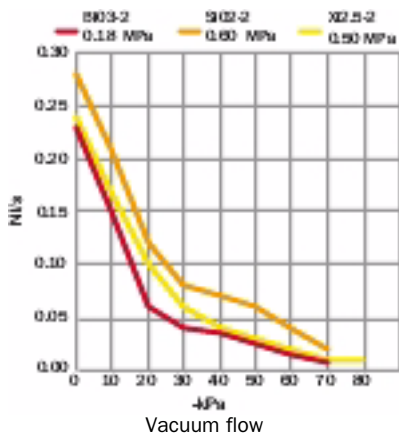
EVACUATION TIME

| COAX® Cartridge | Feed pressure MPa | Air consumption NI/s | Evacuation time (s/l) to reach different vacuum levels (-kPa) | | | | | | | | | Max vacuum -kPa |
|-----------------|-------------------|----------------------|---|------|------|------|------|------|------|------|----|-----------------|
| | | | 10 | 20 | 30 | 40 | 50 | 60 | 70 | 80 | | |
| Bi03-2 | 0.18 | 0.14 | 0.50 | 1.4 | 3.9 | 6.4 | 10.0 | 16.0 | 28.0 | 51.0 | 83 | |
| Si02-2 | 0.60 | 0.12 | 0.41 | 1.01 | 2.01 | 3.30 | 4.90 | 6.90 | 10.2 | — | 75 | |
| Xi2.5-2 | 0.50 | 0.13 | 0.49 | 1.23 | 2.48 | 4.50 | 7.30 | 11.3 | 18.0 | 28.0 | 92 | |

For evacuation times at other feed pressures, see COAX® Cartridge data sheets.

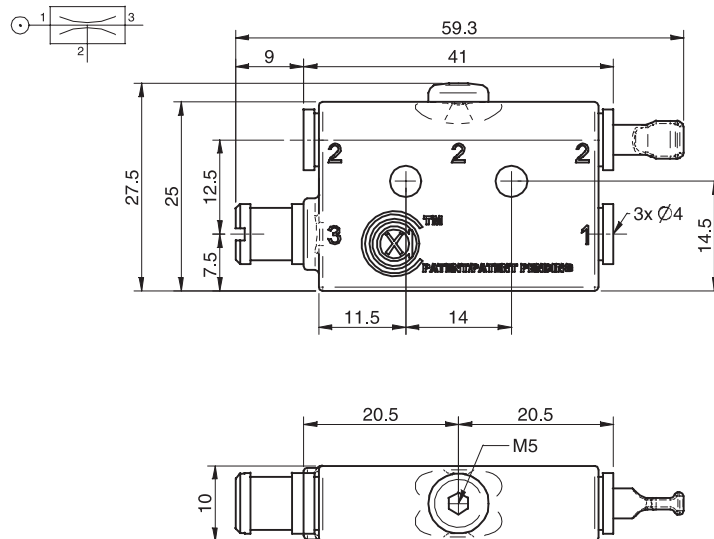
BLOW FLOW

| Cartouche COAX® | Pression d'alimentation MPa | Consommation d'air NI/s | Débit de soufflage (NI/s) à différents niveaux de pression (kPa) | | | | | | | | | | | | Pression maxi kPa |
|-----------------|-----------------------------|-------------------------|--|------|------|------|------|------|------|------|------|------|------|------|-------------------|
| | | | 0 | 20 | 40 | 60 | 70 | 80 | 90 | 100 | 110 | 120 | 130 | 140 | |
| Bi03-2 | 0.6 | 0.37 | 0.61 | 0.59 | 0.54 | 0.46 | 0.42 | 0.41 | 0.41 | 0.41 | 0.41 | 0.41 | 0.41 | 0.41 | 140 |
| Si02-2 | 0.6 | 0.12 | 0.40 | 0.22 | 0.20 | 0.17 | 0.15 | — | — | — | — | — | — | — | 70 |
| Xi2.5 | 0.6 | 0.12 | 0.37 | 0.26 | 0.21 | 0.19 | 0.17 | 0.15 | — | — | — | — | — | — | 90 |



ORDERING INFORMATION

| Description | Art. No. |
|---------------------------|----------|
| Vacuum pump P2010 Bi03-2 | 0107996 |
| Vacuum pump P2010 Si02-2 | 0120608 |
| Vacuum pump P2010 Xi2.5-2 | 0120610 |



ORDERING INFORMATION, ACCESSORIES

| Description | Art. No. |
|----------------------|----------|
| DIN rail 35 mm P2010 | 0110145 |

Vacuum pumps P2010