

MOUNTING BAR - WELDED



- ▶ Rigid mounting with low deflection.
- ▶ Slotted mounting for adjustability.
- ▶ 100-600 mm lengths.

TECHNICAL DATA

Description	Unit	Value
Material		Al, Steel
Temperature range	°C	-30-70

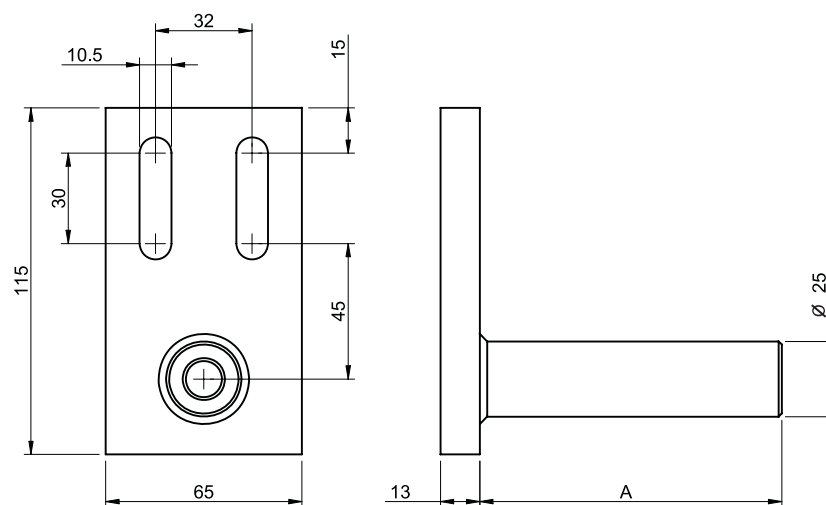
TECHNICAL DATA, SPECIFIC

Description	Unit	0119784	0119785	Value 0119786	0119787	0119788
Linear deflection	mm	0.2 (at 400 N)	0.4 (at 400 N)	1 (at 350 N)	3 (at 300 N)	6.5 (at 200 N)
Torsional twist at 130 Nm	°	1	1.2	1.6	2.5	4.6
Weight	g	327	378	429	531	837

Operational lifetime: 10,000,000 cycles at max. load

ORDERING INFORMATION

Description	PMAT No.	Art. No.
Mounting bar welded L=100	X4038-100	0119784
Mounting bar welded L=150	X4038-150	0119785
Mounting bar welded L=200	X4038-200	0119786
Mounting bar welded L=300	X4038-300	0119787
Mounting bar welded L=600	X4038-600	0119788



DIMENSIONS

Description	A mm
Mounting bar welded L=100	100

Description	A mm
Mounting bar welded L=150	150
Mounting bar welded L=200	200
Mounting bar welded L=300	300
Mounting bar welded L=600	600