

Si08-3



- ▶ Three-stage COAX® cartridge - MINI - with extra high initial vacuum flow.
- ▶ Large vacuum flow in relation to energy consumption.
- ▶ Good for handling porous materials or if surface leakage is present. Recommended for high speed applications.

TECHNICAL DATA

Description	Unit	Value
Feed pressure, max.	MPa	0.7
Temperature range	°C	-10-80
Weight	g	4.9-12.7
Material		Al, NBR, PA, SS

VACUUM FLOW

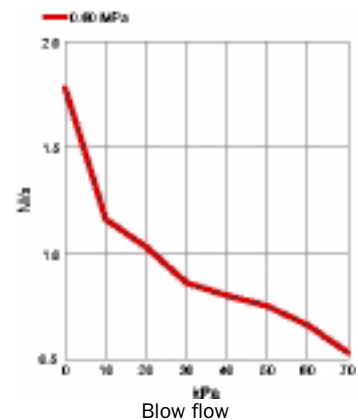
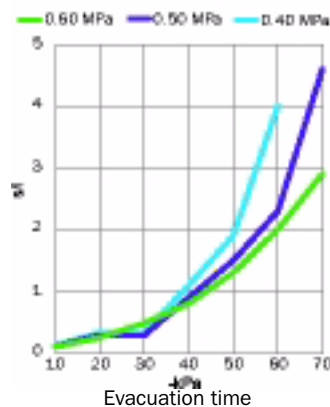
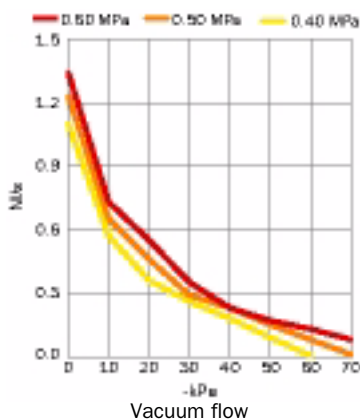
Feed pressure MPa	Air consumption NI/s	Vacuum flow (NI/s) at different vacuum levels (-kPa)								Max vacuum -kPa
		0	10	20	30	40	50	60	70	
0.40	0.31	1.10	0.57	0.36	0.26	0.18	0.09	—	—	60
0.50	0.38	1.23	0.65	0.46	0.29	0.23	0.15	0.08	0.01	70
0.60	0.44	1.34	0.73	0.55	0.35	0.23	0.17	0.13	0.08	75

EVACUATION TIME

Feed pressure MPa	Air consumption NI/s	Evacuation time (s/l) to reach different vacuum levels (-kPa)							Max vacuum -kPa
		10	20	30	40	50	60	70	
0.40	0.31	0.12	0.33	0.66	1.10	1.90	—	—	60
0.50	0.38	0.11	0.29	0.55	0.90	1.50	2.30	4.60	70
0.60	0.44	0.10	0.25	0.48	0.80	1.30	2.00	2.90	75

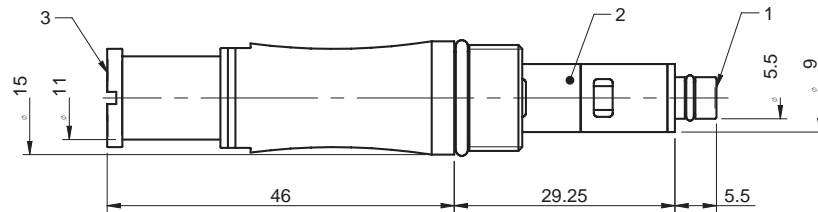
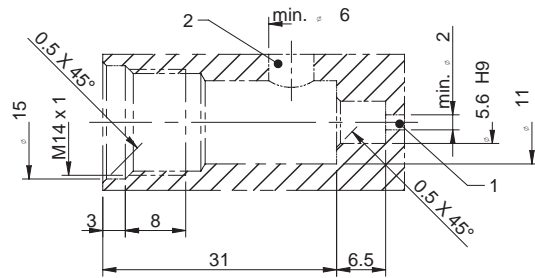
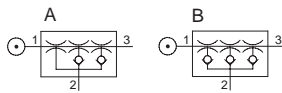
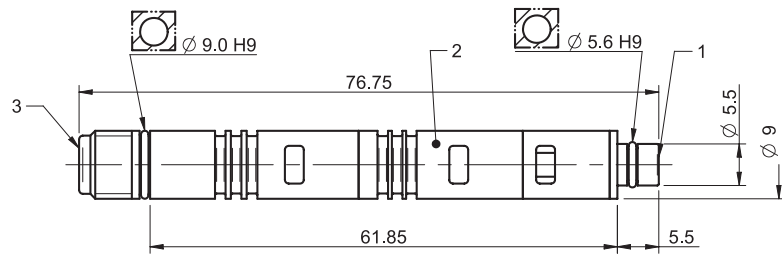
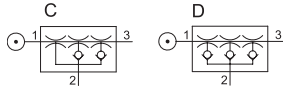
BLOW FLOW

Feed pressure MPa	Air consumption NI/s	Blow flow (NI/s) at different pressure levels (kPa)								Max pressure kPa
		0	10	20	30	40	50	60	70	
0.60	0.44	1.78	1.16	1.03	0.86	0.80	0.75	0.66	0.53	70



ORDERING INFORMATION

Description	Art. No.
C COAX® cartridge MINI Si08-3	0113214
A COAX® cartridge MINI Si08-3, holding cap	0113572
D COAX® cartridge MINI Si08-3, extra non-return valve	0113575
B COAX® cartridge MINI Si08-3, holding cap, extra non-return valve	0113577



ORDERING INFORMATION, ACCESSORIES

Description	Art. No.
Silencer COAX® MINI	0111977
Exhaust adapter	0106344

COAX® cartridge MINI