

## ANGLE ADAPTORS



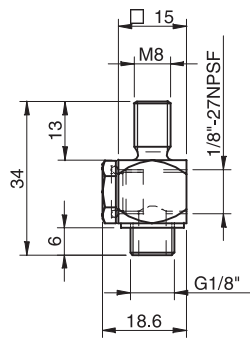
- ▶ Angle adaptors facilitate vacuum connections when space and headroom are limited.
- ▶ Can also be used as T-connectors.

### TECHNICAL DATA

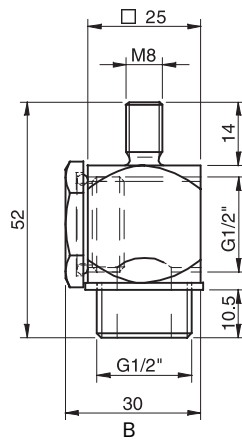
Description	Unit	Value	
		G1/8" – M8	G1/2" –M8
Weight	g	20	120
Temperature range	°C	-40-110	-40-110
Material		CuZn/NBR/PA	SS/NBR/PA

### ORDERING INFORMATION

	Description	Art. No.
A	Angle adapter G1/8"-M8	3150053
B	Angle adapter G1/2"-M8	3150054



A



B