

Gripper

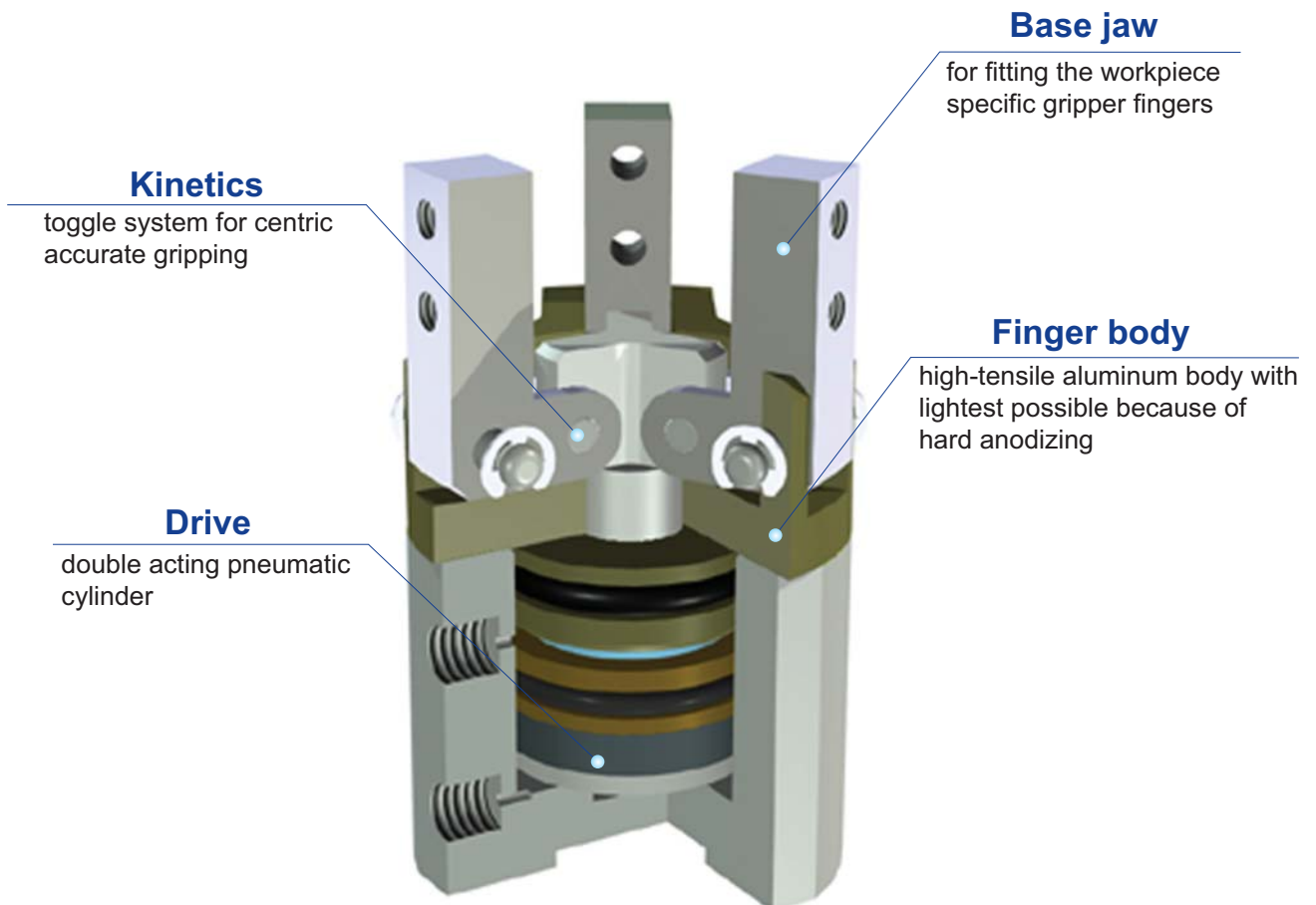
AF06-30,40

Character

- Angular type by link lever driving unit
- Suitable to grip for cylindrical & global workpiece
- Magnetic sensor is available for open-close sensing

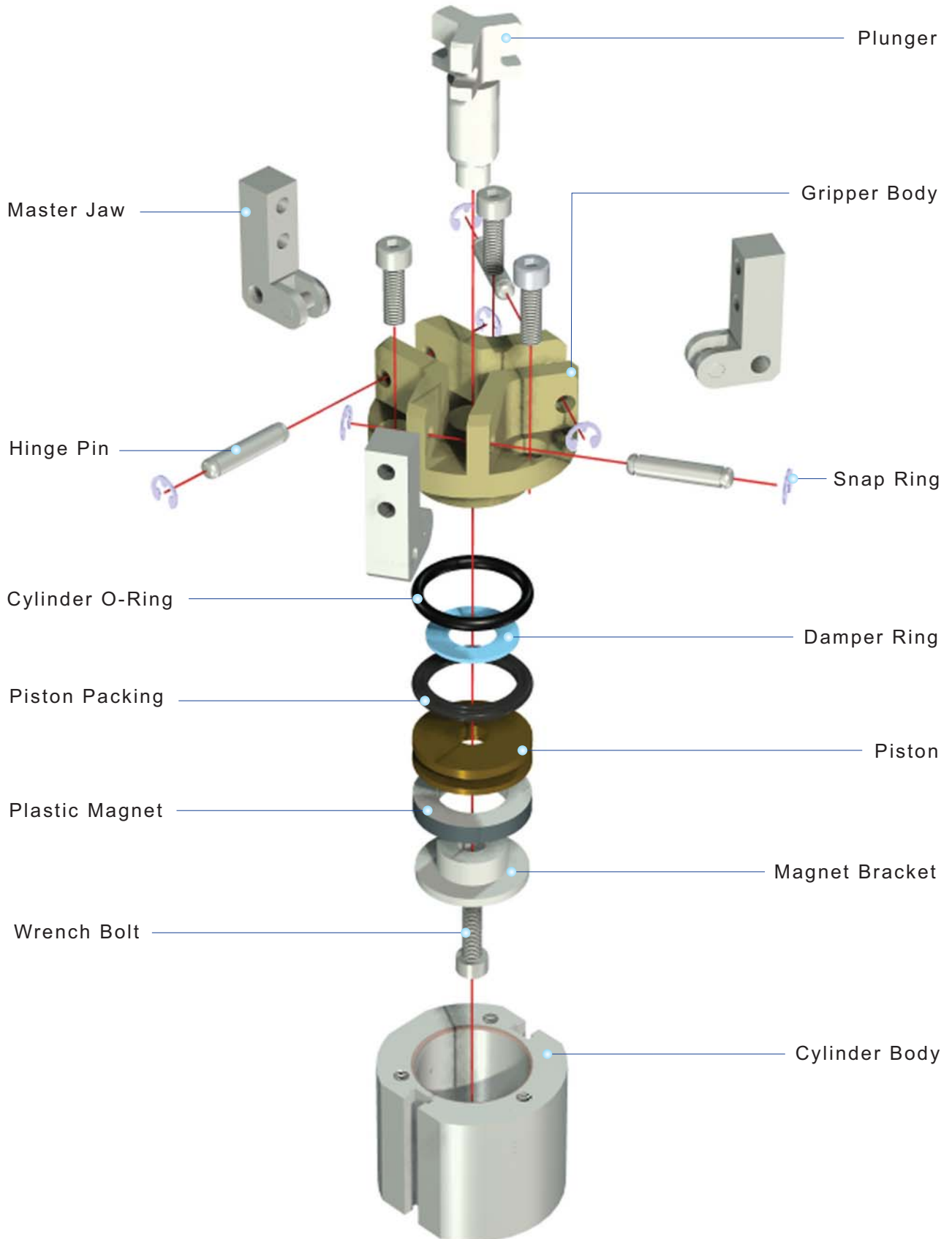


Link lever type



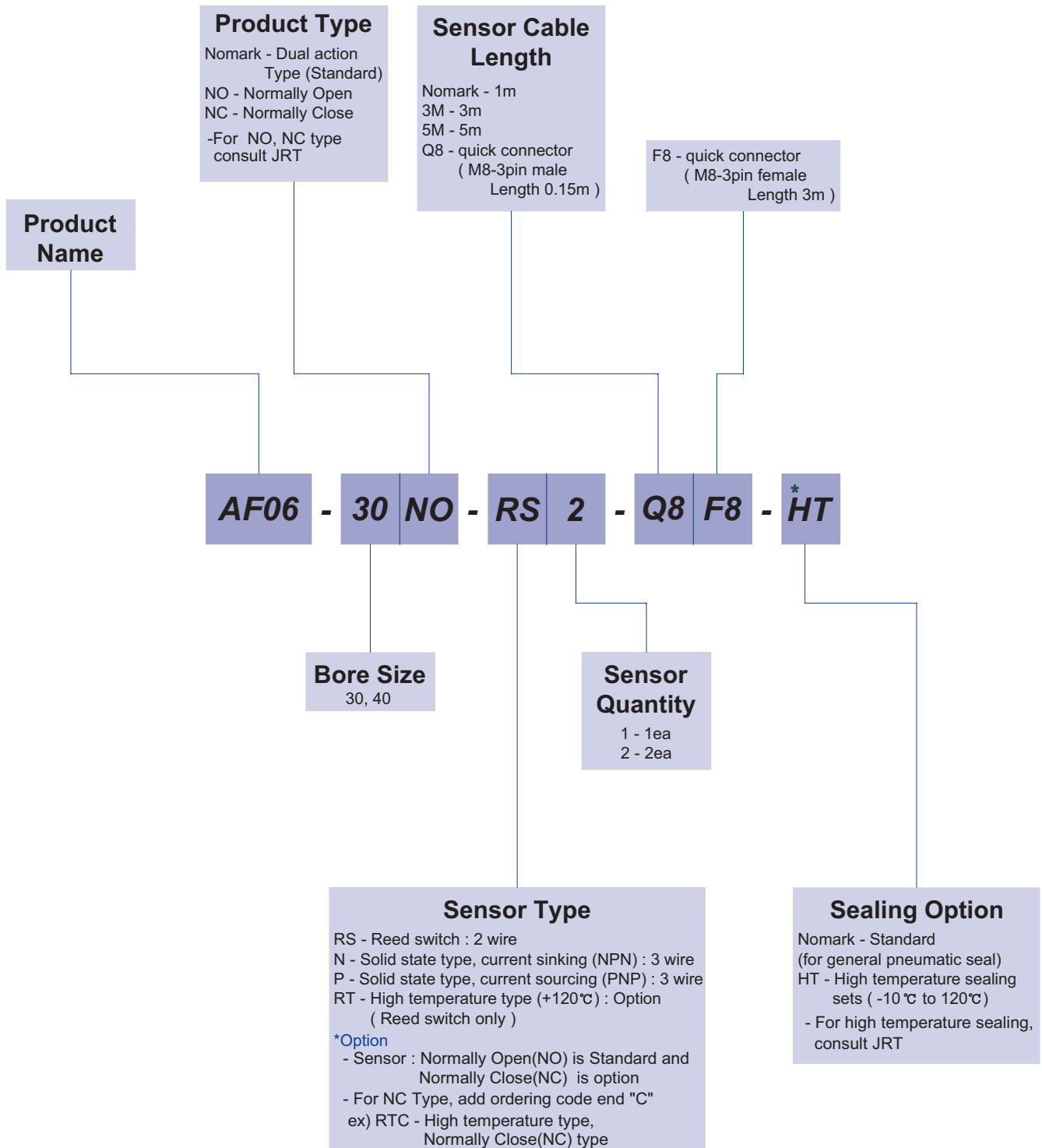
AF06

Exploded view



AF06

Ordering Code



The delivery of * mark option is longer than a standard, So inquire of JRT

AF06

Specification

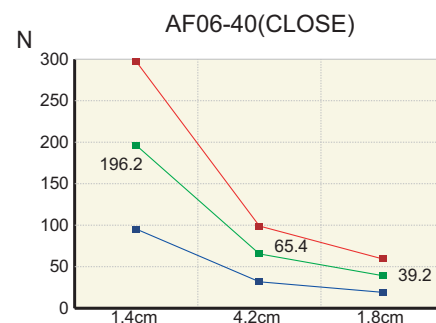
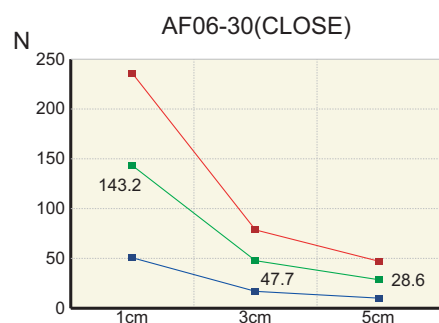
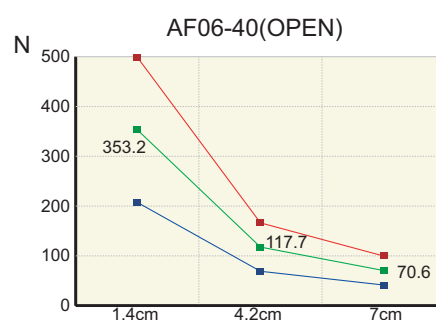
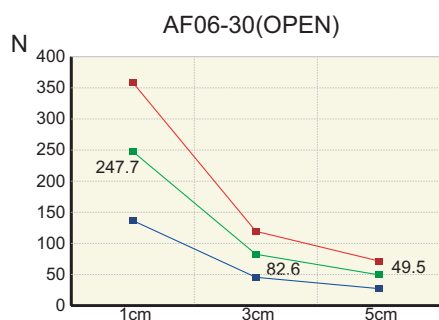
P=Air Pressure[bar] , L=Exertion length[mm]

Products Name	AF06-30	AF06-40	Unit
Working angle	-5 to 20	-5 to 20	degree
Weight	0.39	0.64	kg
Max. length of attach	50	70	mm
Fitting size	PF(G) 1/8	PF(G) 1/8	
Gripping force:Open	$9.81((5.65P-3)/L)$	$9.81((10.4P-1.6)/L)$	N
Gripping force:Close	$9.81((4.72P-9)/L)$	$9.81((7.2P-8)/L)$	N
Air consumption per cycle	2.6	5.8	cm ³
Closing / Opening time	0.01 / 0.01	0.01 / 0.01	sec
* Repeat accuracy	0.02	0.02	mm
Max.cycle per minute	30	30	
Operating pressure	3~7		bar
Ambient temperature	-5 to 60		°C
Lubrication	Needless		

* After 100 consecutive strokes to end positions

Gripping Force per exertion length

Legend : ■ 7[bar] ■ 5[bar] ■ 3[bar]



Notes

A large grid of dashed lines for writing notes. The grid consists of 20 columns and 25 rows of squares, with rounded corners. The lines are light gray and spaced evenly across the page.