



KOLLMORGEN

# Digital Servoamplifier SERVOSTAR® 600

 **DANAHER**  
MOTION

Helping you build a better machine, **faster.**

## SERVOSTAR® 600

Designed for worldwide usability the **SERVOSTAR® 600** series of servo amplifiers makes deliberate use of the advantages of digital servo technology.

High flexibility of hardware and software, simple operation and big function range even in the standard device are convincing arguments.

Innovative techniques combined with an attractive design offer you the solution to just about every drive problem.

Combine this with our synchronous servomotors and all the important accessories and you can see that we provide you with completely integrated drive systems.



## Highlights

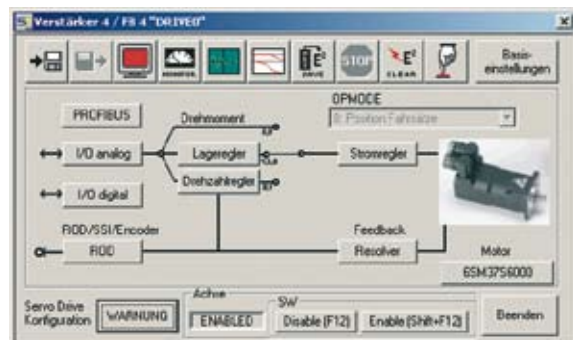
- Operation directly from mains supply, 230V<sub>-10%</sub> ... 480V<sup>+10%</sup>, 50 Hz  
208V<sub>-10%</sub> ... 480V<sup>+10%</sup>, 60 Hz
- Up to 20 Amps with integral mains filter
- All shield connections directly at the amplifier
- DC-link circuits can be connected in parallel with patented ballast dealing
- Encoder emulation: ROD426- compatible (dec./bin.) or SSI (Gray/binary) selectable
- Feedback from resolver or high resolution sinecosine encoder
- Fully programmable via RS232 interface
- Operation from a PC via setup software (with WINDOWSTM 95/98/2000/ME/NT/XP)
- Operation with 2 keys on the amplifier, status monitoring via LED display
- up to 20 Amps suitable for 300mm switchgear cabinets
- Interface integrated for stepper controllers, masterslave operation, electr. gear and CANopen
- Intelligent positioning: speed profiles, register control, jolt limiting, daisy chained tasks, absolute and relative tasks, several types of reference traverses
- Multi-Interface slot  
Choose one of these expansion cards additionally to the integrated interfaces:  
PROFIBUS DP, SERCOS, DeviceNet, Ethernet, Single Axis Controller or I/O expansion

## WINDOWSTM Setup Software

The WINDOWSTM 95/98/NT/2000/ME/XP-compatible operator software offers direct access to all the relevant control parameters of the **SERVOSTAR® 600**.

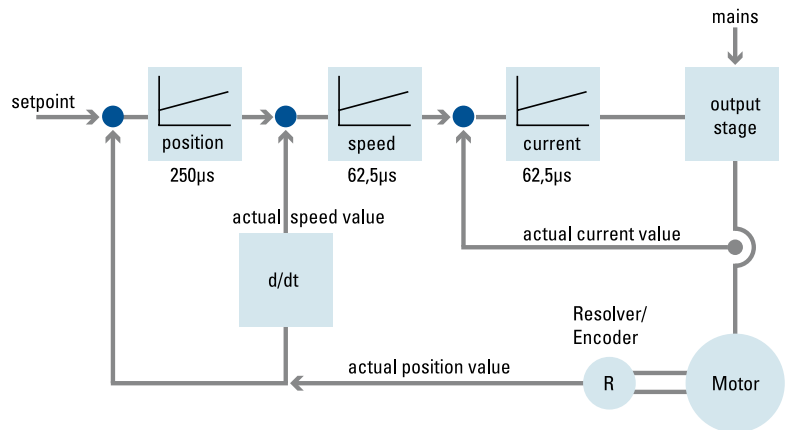
During commissioning, the control-loop behaviour can be optimized online – while the drive is running.

Windows techniques make it possible to display several servo controllers that are linked through the integrated CANopen bus. Integrated oscilloscop functionality, bode plot, a terminal editor for ASCII channel communication, import/export of data sets and predefined parameter sets for amplifier-motor combinations simplify the drives setup.



## Control circuits

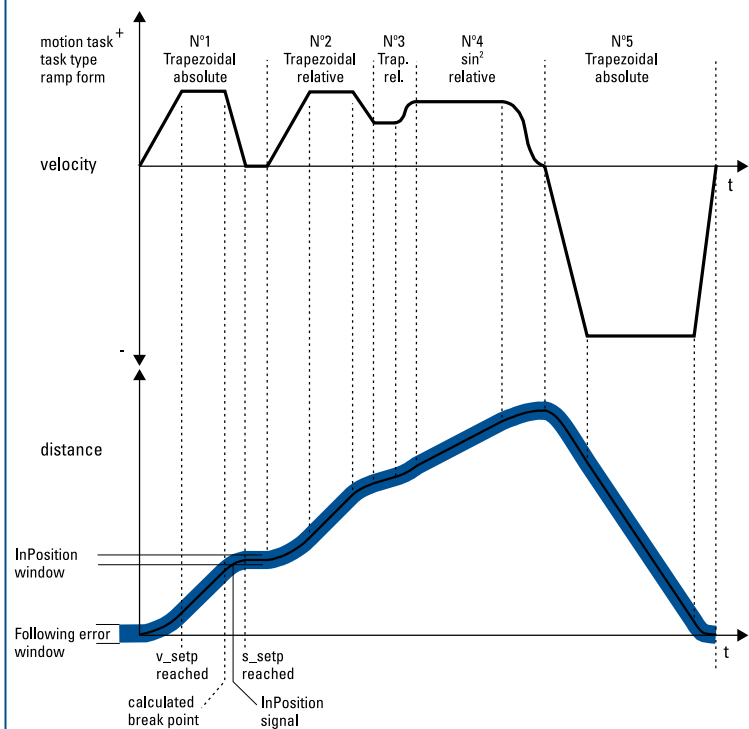
- Control as field coordinates
- Speed setpoint ramps are adjustable
- Dead-band is adjustable
- PLC functionality



## Position controller, 250µs cycle time

For many applications, the integrated position controller can save additional CNC functions.

- 180 motion blocks can be stored in the servo amplifier
- 16 types of homing
- 4 position registers
- Speed profile/register control is possible
- Linking of motion tasks
- Absolute and relative movements
- Adjustable following-error window
- Adjustable window for the InPosition signal



SERVOSTAR® 610



SERVOSTAR® 614



SERVOSTAR® 640

## Technical Data

		SERVOSTAR® 600							
Rated data	DIM	601	603	606	610	614	620	640	670
Rated supply voltage	V~	3 x 208V <sub>-10%</sub> ... 480V <sub>+10%</sub> , 60Hz 3 x 230V <sub>-10%</sub> ... 480V <sub>+10%</sub> , 50Hz							
Rated installed power for S1 operation	kVA	1	2	4	7	10	14	30	50
Rated DC link voltage	V=	260...675							
Rated output current (rms value, ± 3%)	Arms	1,5	3	6	10	14	20	40	70
Peak output current (max. 5s, ± 3%)	Arms	3	6	12	20	28	40	80	140
Continuous power regen circuit (RBint)	W	80	80	200	200	200	200		
Continuous power regen circuit (RBext) max.	kW	0,5	0,5	1,5	1,5	1,5	1,5	6	6
Peak power regen circuit (RBext) max.	kW	21	21	21	21	21	21	45	70

## The sizes for 300/400mm switchgear cabinets

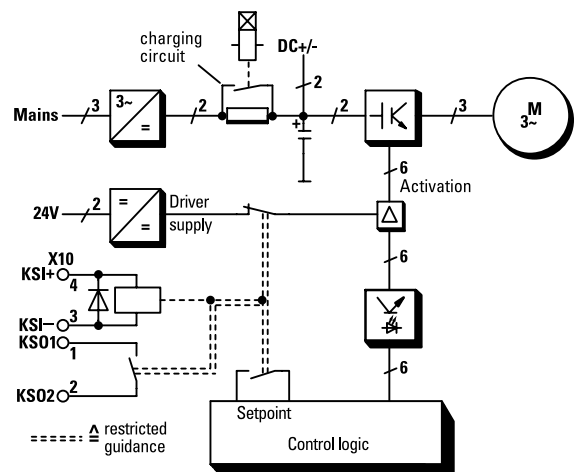
		SERVOSTAR® 600			
		601 / 603 / 606 / 610	614	620	640 / 670
Height		275 mm	275 mm	275 mm	345 mm
Width		70 mm	100 mm	120 mm	250 mm
Depth		265 mm	265 mm	265 mm	300 mm
Depth with connectors		273 mm	273 mm	273 mm	325 mm

## Option -AS- : personnel safety – restart lock

Personnel-safety requirement to secure a drive against restarting. The Option -AS- uses an additional connector to provide connections to a safety relay with positive-action contacts in the servo controller.

The advantages of this solution are obvious:

- no power contactor required
- no switching of the main supply circuitry
- low wiring requirement



## Multi-Interface



### CANopen Interface always integrated

A CANopen interface is integrated into the standard instrument. If several SERVOSTAR® 600 are linked together through the CANopen interface, then the entire group can be parameterized and commissioned with the aid of a PC and the WINDOWS™ operator software, without requiring a master.

#### Transmission procedure:

- CAN standard ISO 11898 (high-speed communication)
- max. 1MBit/s Übertragungsgeschwindigkeit
- Unterstützt die CANopen Standards DS301, DSP402



### SERCOS expansion card

The servo amplifier can be operated through a SERCOS Interface. This expansion card makes it possible to transmit setpoint and actual values with different cycle times (1 to 65 ms) with an additional interpolation of the setpoints within the drive. This enables a synchronization that is exact to the µs, for fast, precise multi-axis control.

#### Transmission procedure:

- SERCOS standard to IEC 61491
- transmission through interference-proof optical fibres
- baud rate pre-selectable to 2 or 4 MBaud
- optical output power is adjustable



### PROFIBUS DP expansion card

The servo amplifier can be operated through a PROFIBUS DP interface.

#### Transmission procedure:

- PROFIBUS DP to EN 50170
- baud rates 187.5 kBaud to 12 MBaud
- supports the PROFIBUS drive profile PROFIDRIVE

### DeviceNet™

### DeviceNet expansion card

A DeviceNet Interface can be used as an option.

#### Transmission procedure:

- CAN-Standard ISO 11898 (high-speed communication)
- 500kBit/s max. transmission speed

### Ethernet expansion card

This expansion card connects your SERVOSTAR® 600 to your LAN and to the Internet. With the standard TCP/IP transmission you can get status information and send parameter values to the amplifier.

### I/O expansion card

The I/O-expansion card is an extremely economical way of operating servo controllers under position control for simple automation tasks. 14 additional digital inputs permit the selection and start of the motion tasks that are stored in the motion-task memory of the SERVOSTAR® 600. 8 digital outputs report the status of the drive to the higher-level control.

**EUROPE****United Kingdom**

Danaher Motion  
 Chartmoor Road, Chartwell Business Park  
 Leighton Buzzard, Bedfordshire  
 LU7 4WG; United Kingdom  
 Phone: +44 (0)1525 243 243  
 Fax: +44 (0)1525 243 244  
 E-mail: sales.uk@danahermotion.com

**France**

Danaher Motion  
 C.P 80018  
 12, Rue Antoine Becquerel – Z.I. Sud  
 F – 72026 Le Mans Cedex 2  
 France  
 Phone: +33 (0) 243 50 03 30  
 Fax: +33 (0) 243 50 03 39  
 E-mail: sales.france@danahermotion.com

**Germany**

Danaher Motion GmbH  
 Sales Office North  
 Wacholderstr. 40-42  
 40489 Düsseldorf  
 Germany  
 Phone: +49 (0) 203 9979 214  
 Fax: +49 (0) 203 9979 3214  
 E-Mail: iris.tolusch@danahermotion.com

Danaher Motion GmbH  
 Sales Office South West  
 Brückenfeldstraße 26/1  
 75015 Bretten  
 Germany  
 Phone: +49 (0) 7252 97390 56  
 Fax: +49 (0) 7252 97390 55  
 E-Mail: kerstin.mueller@danahermotion.com

Danaher Motion GmbH  
 Sales Office South East  
 Kiesgräble 7  
 89129 Langenau  
 Germany  
 Phone: +49 (0) 7471 62 23 23  
 Fax: +49 (0) 7471 62 23 26  
 E-Mail: ursula.koschak@danahermotion.com

**Italy**

Danaher Motion srl  
 Largo Brughetti 1/B2  
 I - 20030 Bovisio Masciago  
 Italy  
 Phone: +39 0362 594260  
 Fax: +39 0362 594263  
 E-mail: info@danahermotion.it

**Sweden**

Danaher Motion Stockholm AB  
 Solkraftsvägen 13  
 135 70 Stockholm  
 Sweden  
 Phone: +46 (0) 8-682 64 00  
 Fax: +46 (0) 8-682 65 80  
 E-mail: info@danahermotion.se

**Switzerland**

Danaher Motion SA  
 La Pierreire 2  
 1029 Villars-Ste-Croix  
 Switzerland  
 Phone: +41 (0) 21 631 33 33  
 Fax: +41 (0) 21 636 05 09  
 E-mail: info@danaher-motion.ch

**USA, CANADA or MEXICO**

Danaher Motion  
 203A West Rock Road  
 Radford, VA 24141 USA  
 Phone: 1-540-633-3400  
 Fax: 1-540-639-4162  
 E-mail: DMAC@danahermotion.com

**ASIA****China**

Danaher Motion  
 Rm 2205, Scitech Tower  
 22 Jianguomen Wai Street  
 Beijing, China, 100004  
 Phone: +86 10 6515 0260  
 Fax: +86 10 6515 0263  
 E-mail: chinainfo@danahermotion.com.cn

**Japan**

Danaher Motion Japan  
 2F, Tokyu Reit Hatchobori Bldg,  
 2-7-1 Hatchobori Chuo-ku,  
 Tokyo 104-0032 Japan  
 Phone: +81-3-6222-1051  
 Fax: +81-3-6222-1055  
 E-mail: info@danahermotion.co.jp